

Thank you for choosing HUAWEI Mobile WiFi

Supported functions and actual appearance depend on the specific models you purchased. The illustrations are provided for your reference only. For details about the model you selected, consult your service provider.

This guide briefly describes the functions of the Mobile WiFi. For how to use the Mobile WiFi and troubleshoot problems, see help on the web management page. For how to access the web management page, see " Accessing the web management page" on page 13.

Copyright © Huawei Technologies Co., Ltd. 2012. All rights reserved.

THIS DOCUMENT IS FOR INFORMATION PURPOSE ONLY, AND DOES NOT CONSTITUTE ANY KIND OF WARRANTIES.

Getting to Know HUAWEI Mobile WiFi

Connection Scenarios

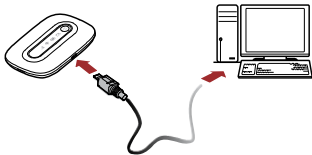
A Wi-Fi device or computer can be connected to the Internet through the Mobile WiFi. The actual connection procedure depends on the operating system of the Wi-Fi device or computer. The connection scenarios illustrated here are for your reference.

Before setting up a USB connection, install a driver as prompted.

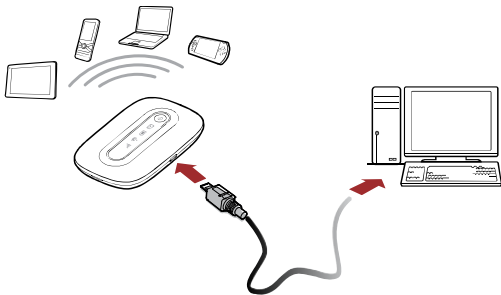
Scenario 1: Multi-device access via Wi-Fi USB



Scenario 2: One-device access via USB



Scenario 3: Multi-device access via Wi-Fi and USB at the same time

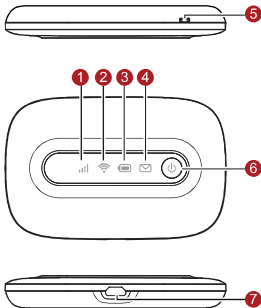


Appearance





No.	Item
1	Signal indicator
2	Wi-Fi indicator
3	Battery indicator
4	SMS indicator
5	Strap hole
6	Power button
7	USB port(Micro USB Type B)


Note:

Wi-Fi: Wireless Fidelity



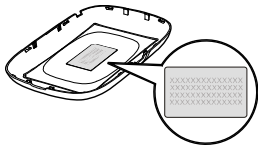
Indicator

Icon	Indicator	Status
 Signal	Green	Strong signal
	Orange	Weak signal
	Red	No signal
 Wi-Fi	Green	Wi-Fi turned on
 Battery	Green	Sufficient battery
	Blinking green	Charging
	Red	Low battery
 SMS	Green	New message
	Blinking green	Inbox full

If no operation is performed on the Mobile WiFi within a preset period, the Mobile WiFi enters the standby mode, in which the battery indicator () blinks slowly and the other indicators are off. To turn on the other indicators, press any key.

SSID and Wireless Network Key

To connect a Wi-Fi device to your Mobile WiFi, an SSID and a wireless network key are required. The default SSID and wireless network key label is affixed to your Mobile WiFi.



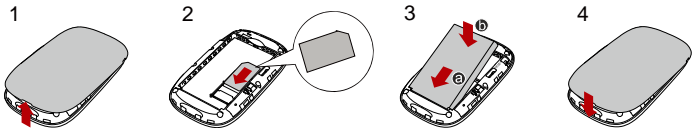
Before You Start

Installing the SIM Card and the Battery

Caution: Do not use any SIM card that is not standard or is incompatible with the Mobile WiFi.
Otherwise, the Mobile WiFi may be damaged.



Insert the SIM card in the card slot. Make sure that the SIM card is facing in the right direction, as shown in figure 2, and then slide the SIM card into the slot.



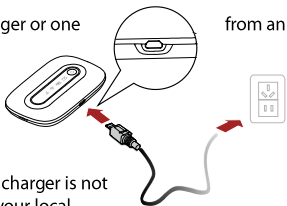
Charging the Battery

If the battery has not been used for a long time, it must be charged first.

Method 1: Using the charger

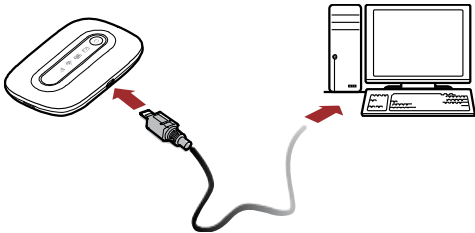
Caution:

- Only use chargers compatible with the Mobile WiFi and provided by a designated manufacturer. Use of an incompatible charger or one of unknown manufacturer may cause the Mobile WiFi to malfunction, fail, or could even cause a fire. Such use voids all warranties, whether expressed or implied, on the product.
- The charger is an optional accessory. If the charger is not provided in the package, you can contact your local dealer to buy one yourself.



Method 2: Connecting to a PC for charging

Connect the Mobile WiFi to a PC using a compatible data cable.





Accessing the Internet via Wi-Fi Connection

By default, management parameters are preset on the Mobile WiFi according to the requirements of the service provider. Follow the steps below to quickly access the Internet.


For how to use the Mobile WiFi and troubleshoot problems, see help on the web management page.

Step1: Power on the Mobile WiFi

Press and hold  until the indicators turn on.
The Mobile WiFi is powered on.

Note: Press and hold  to power off the Mobile WiFi.

Step2: Establish a Wi-Fi Connection (Take a computer with WindowsXP operating system as an example)

1. Make sure that  is green.



2. Select **Start > Control Panel > Network Connections > Wireless Network Connection**.

Note: To set up a Wi-Fi connection, the PC must have a wireless network adapter installed. If **Wireless Network Connection** is displayed, a wireless network adapter is available. Otherwise, check to make sure you have a wireless network adapter installed.

3. Click **View available wireless networks** to display a list of wireless networks available.
4. Select a network indicated by the SSID of the Mobile WiFi, and then click **Connect**.

Note:

- If the encryption parameter is already set for the Mobile WiFi, the Wireless Network Connection dialogbox is displayed. Enter the wireless network key in the dialog box.
 - The default SSID and wireless network key label is affixed to your Mobile WiFi.
5. Wait until the wireless connection icon is displayed in the status area in the lower right corner of the PC screen.

Step3: Access the Internet

After you establish a Wi-Fi connection successfully, you can access the Internet using the following modes.

Caution: Please select a proper Internet connection mode based on your service expense. For example, if you are subscribed to the time-based network service, you are recommended to select **Manual** mode. For details about the service expense, consult your service provider.

Mode	Operations
Auto	After the Mobile WiFi is powered on, it will connect to the Internet automatically. If there is no data transmission over a period of time, the Mobile WiFi automatically terminates the Internet connection.
Manual	Launch the web management page and follow the prompts to connect to or disconnect from the network.

Note:

- Launch the web management page to select the mode for accessing the Internet.
- You can choose whether to enable the Mobile WiFi to connect to the Internet automatically even while you are roaming. If this function is disabled, the Mobile WiFi automatically disconnects from the Internet while you are roaming. To access the Internet, set up a connection manually.

Accessing the Web Management Page

1. Make sure that the connection between the Mobile WiFi and the client is a proper one.
2. Start the Internet browser and enter <http://192.168.1.1> in the address bar.
3. Enter the password and log in to the web management page.

Note: The default password is **admin**.

Daily Use

Power Saving Mode

If the Mobile WiFi is powered by the battery only, choose whether to enable the Mobile WiFi to turn off Wi-Fi automatically. If this function is enabled and no Wi-Fi devices access the Mobile WiFi for a preset period, the Mobile WiFi turns off Wi-Fi automatically. To turn on Wi-Fi, press any key.

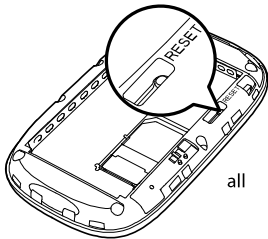
Validating the PIN Code

If PIN code protection is enabled, log in to the web management page and follow the prompts to enter the correct PIN code. Both PIN and PUK are delivered with the SIM card. For details, consult your service provider.

Restoring Factory Defaults

If you forget the changes you have made to some parameters, you may restore factory defaults and reconfigure the Mobile WiFi. To restore the factory defaults, press and hold the **RESET** button until all the indicators are off. All factory default settings are successfully restored.

Note: Restoring factory defaults deletes all personal configuration settings and restores web-based management settings and parameters to their default values.



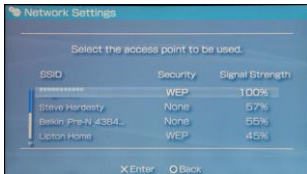
Example 1: Wi-Fi Connection to a Game Machine (Sony PSP)

1. Turn on the PSP WLAN switch.
2. Select **Settings** > **Network Settings**.
3. Select **Infrastructure Mode** to connect to your local Wi-Fi access point.
4. Select **New Connection** to specify an easy to remember connection name.
5. Select **Scan** to detect all networks within range. The access point list is displayed.
6. Select a network indicated by the SSID of the Mobile WiFi. First press the ► button of your game machine to confirm the SSID and then press it again to input the wireless network key.



Note: The default SSID and wireless network key label is affixed to the Mobile WiFi.

7. Press the ► button of your game machine to continue, and then press the X button to save the settings.
8. Select **Test Connection** to check the connection.
9. Go to **Internet Browser**.



Example 2: Wi-Fi Connection to a Tablet (iPad)

1. Touch **Settings** > **WLAN**, and then turn on WLAN.
2. Automatically detect the networks in range and display the access point list.
3. Select a network indicated by the SSID of the Mobile WiFi.
4. If necessary, enter a password and tap **Join**. (Networks requiring a password appear with a lock icon.)



Note: Some Wi-Fi clients such as iPhone, iPod, PS3 and NDSi can also access the Internet via the Mobile WiFi. For details, see the user guides of the Wi-Fi clients.

Tips

If the Mobile WiFi is placed in an environment with poor ventilation, it may overheat after extended use. When the Mobile WiFi overheats, it will switch off and disconnect from the network automatically to protect itself. If this happens, place the Mobile WiFi in a well-ventilated location, then restart the Mobile WiFi.

If you are experiencing difficulties using the Mobile WiFi, try the following:

- See help on the web management page.
- Restart the Mobile WiFi.
- Restore the factory defaults.
- Contact your service provider.

Version: V100R001_01 Part Number: 31010JDM